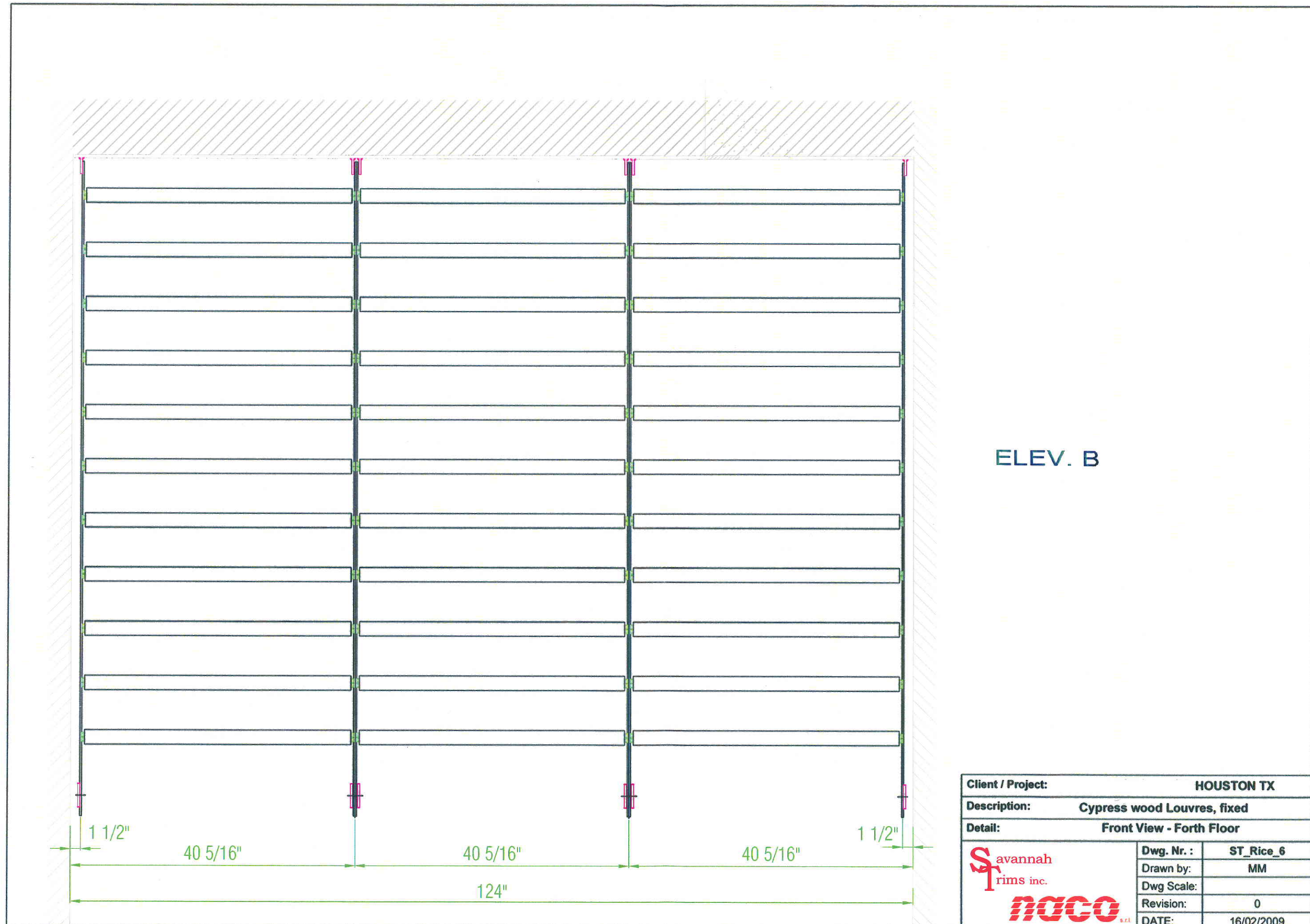


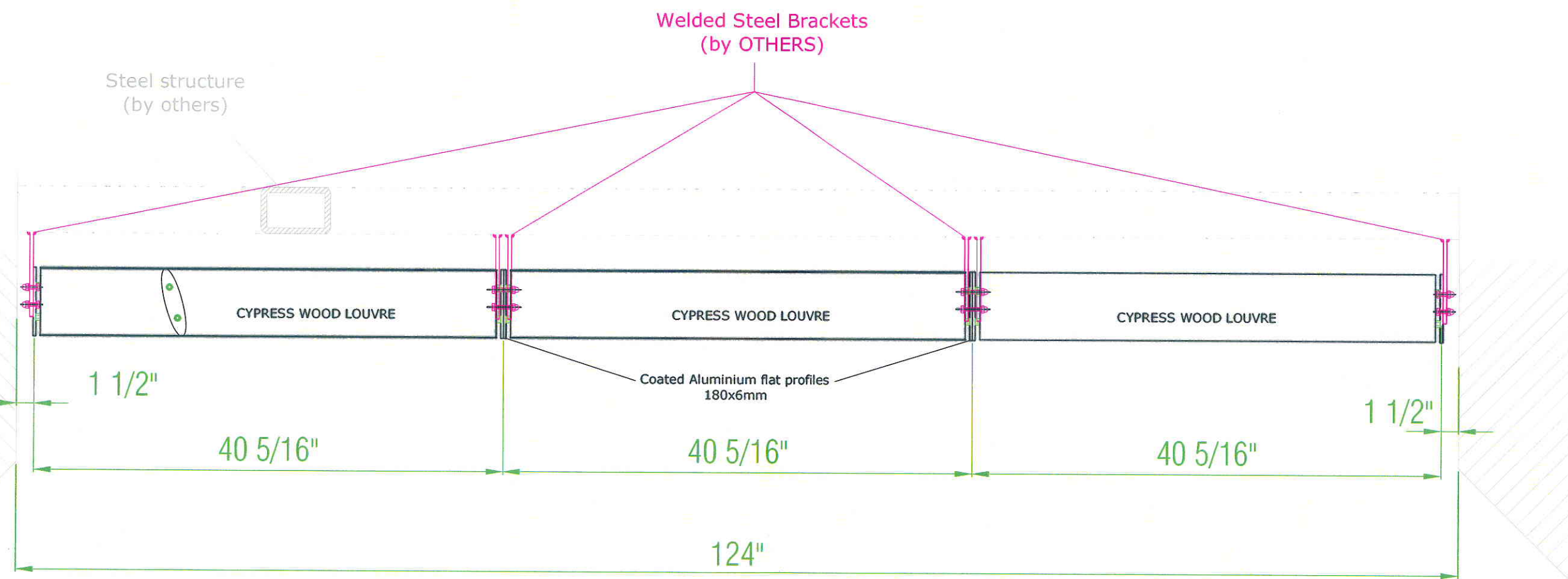
ELEV. A

Client / Project:		HOUSTON TX
Description:		Cypress wood Louvres, fixed
Detail:		Front View - Second and Third Floor
	Dwg. Nr. :	ST_Rice_6
	Drawn by:	MM
	Dwg Scale:	
	Revision:	0
	DATE:	16/02/2009




ELEV. B

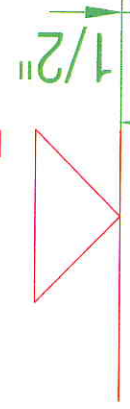
Client / Project:		HOUSTON TX	
Description:		Cypress wood Louvres, fixed	
Detail:		Front View - Forth Floor	
	Dwg. Nr. :	ST_Rice_6	
	Drawn by:	MM	
	Dwg Scale:		
	Revision:	0	
	DATE:	16/02/2009	



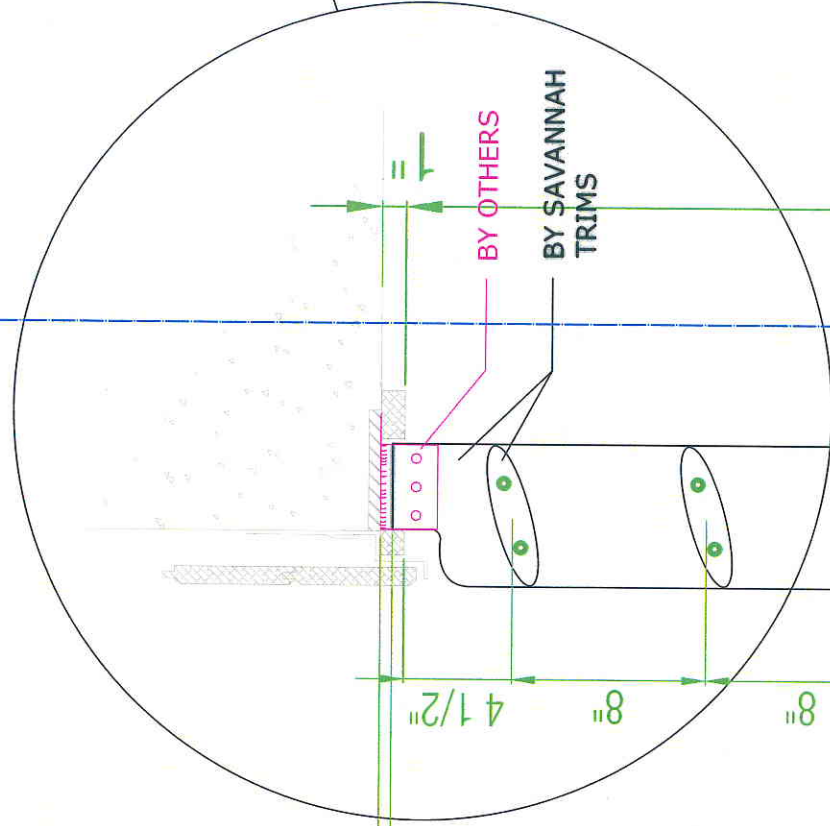
PLAN VIEW

Client / Project:		HOUSTON TX
Description:		Cypress wood Louvres, fixed
Detail:		Horizontal section
	Dwg. Nr. :	ST_Rice_6
	Drawn by:	MM
	Dwg Scale:	
	Revision:	0
DATE:		16/02/2009

41' 6 1/2"



Detail 1



BY OTHERS
BY SAVANNAH TRIMS

4 1/2"

8"

8"

5 7/8"

5"

8"

8"

8"

8"

8"

8"

8"

4 1/2"

1 1/2"

1 1/2"

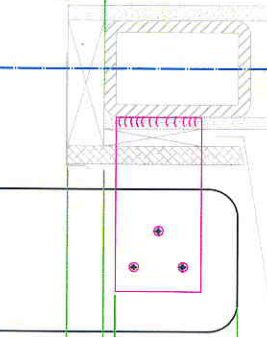
5"

91 1/2" (2324)

96 1/2" (2451)

89" (2260)

of steel tube



Client / Project:

HOUSTON TX

Description: Cypress wood Louvres, fixed

Detail: Forth Floor Vertical section

Savannah Trims inc.



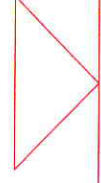
Dwg. Nr. : ST_Rice_6

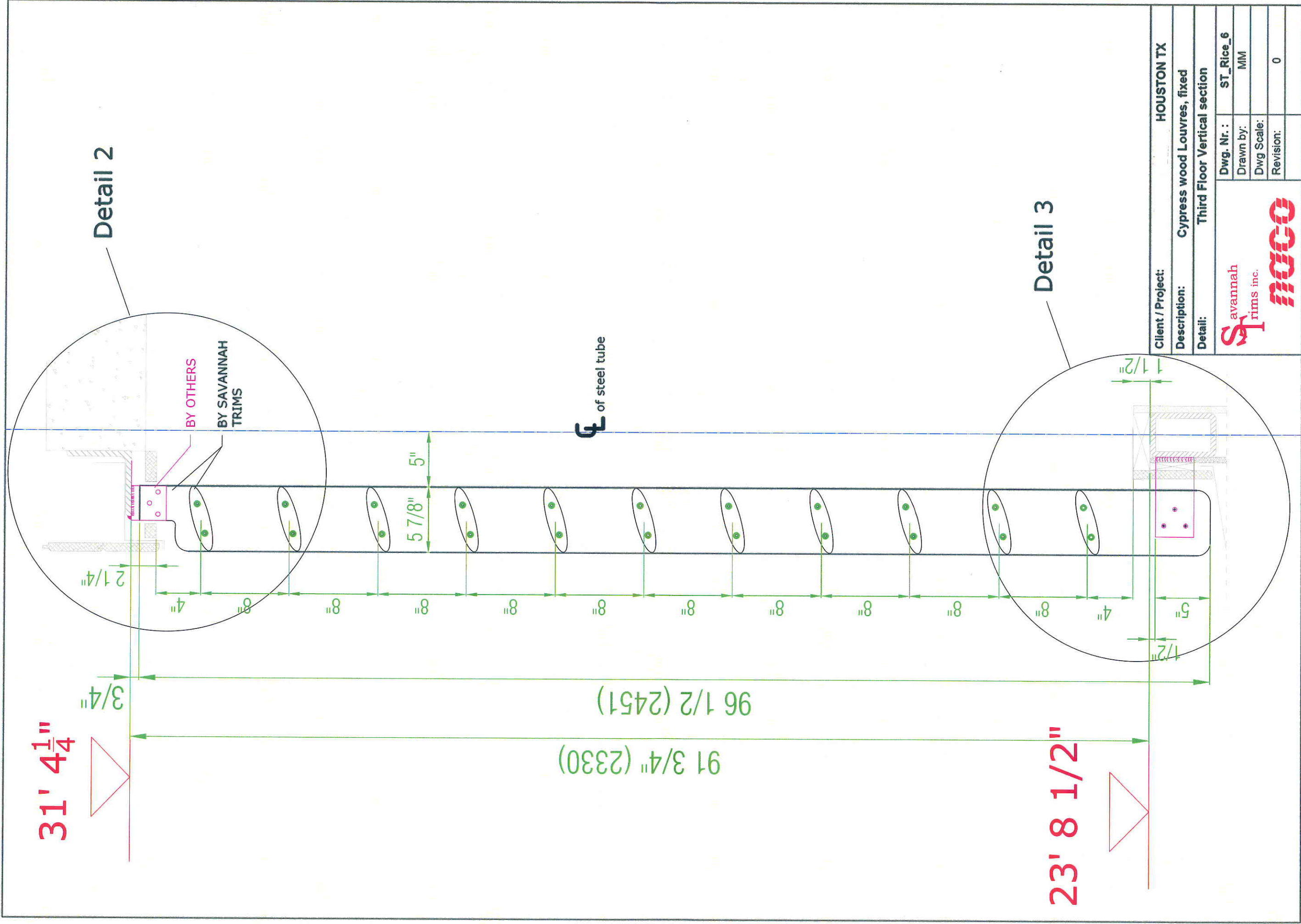
Drawn by: MM

Dwg Scale:

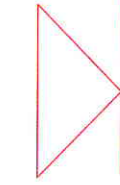
Revision: 0

33' 11"



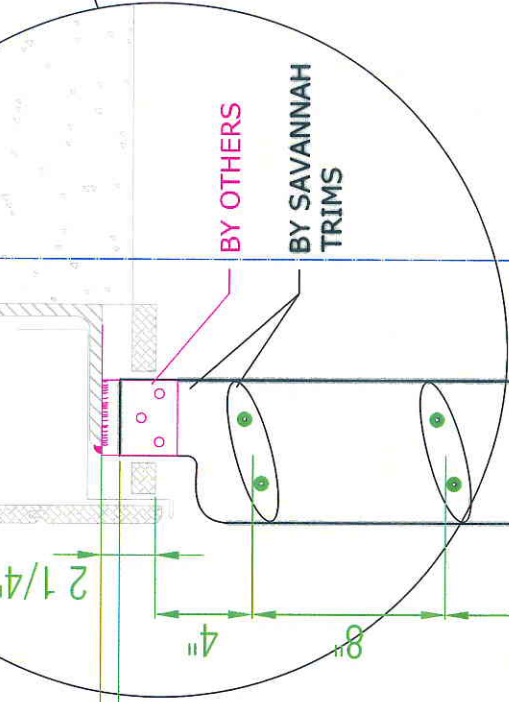


21' 3/4"

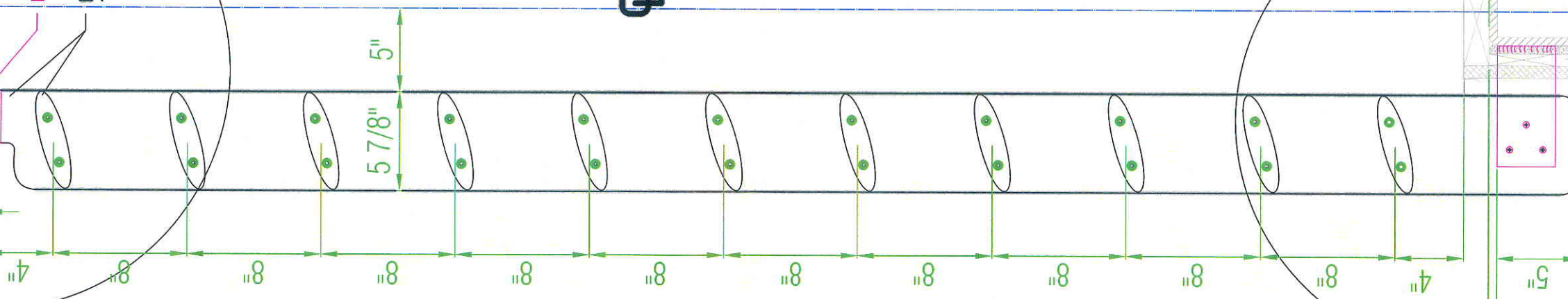


3/4"

2 1/4"



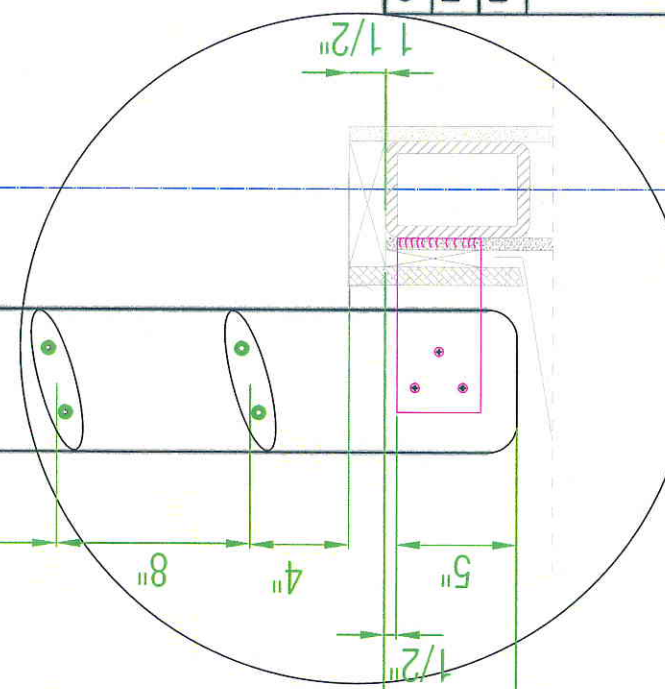
Detail 2



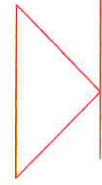
91 3/4" (2330)

96 1/2 (2451)

of steel tube

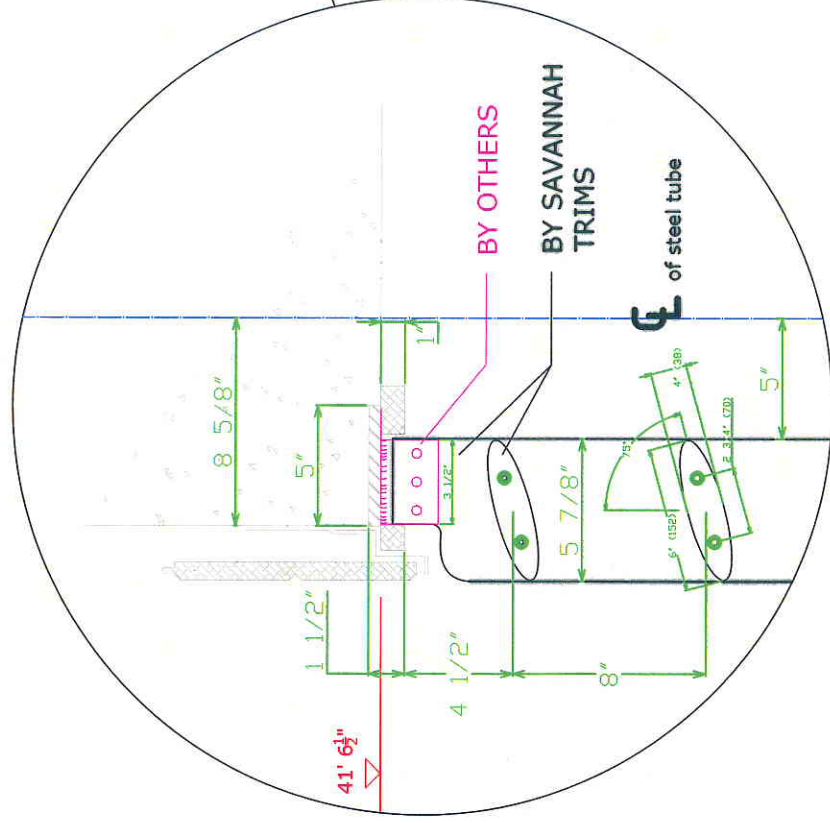


13' 5"

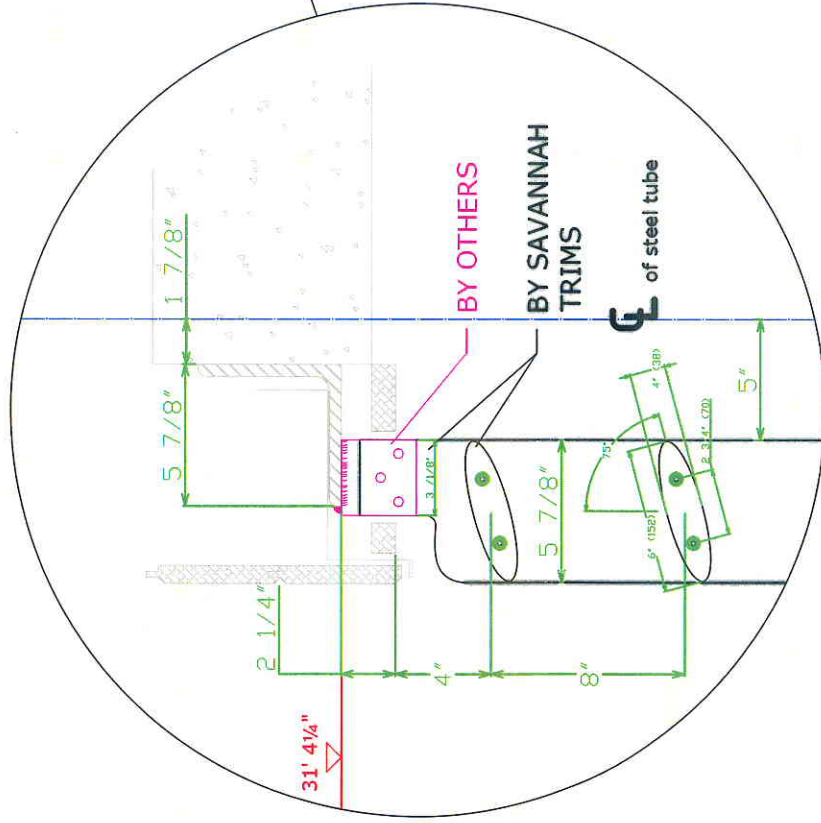


Client / Project:	HOUSTON TX
Description:	Cypress wood Louvres, fixed
Detail:	Second Floor Vertical section
Dwg. Nr.:	ST_Rice_6
Drawn by:	MM
Dwg Scale:	
Revision:	0

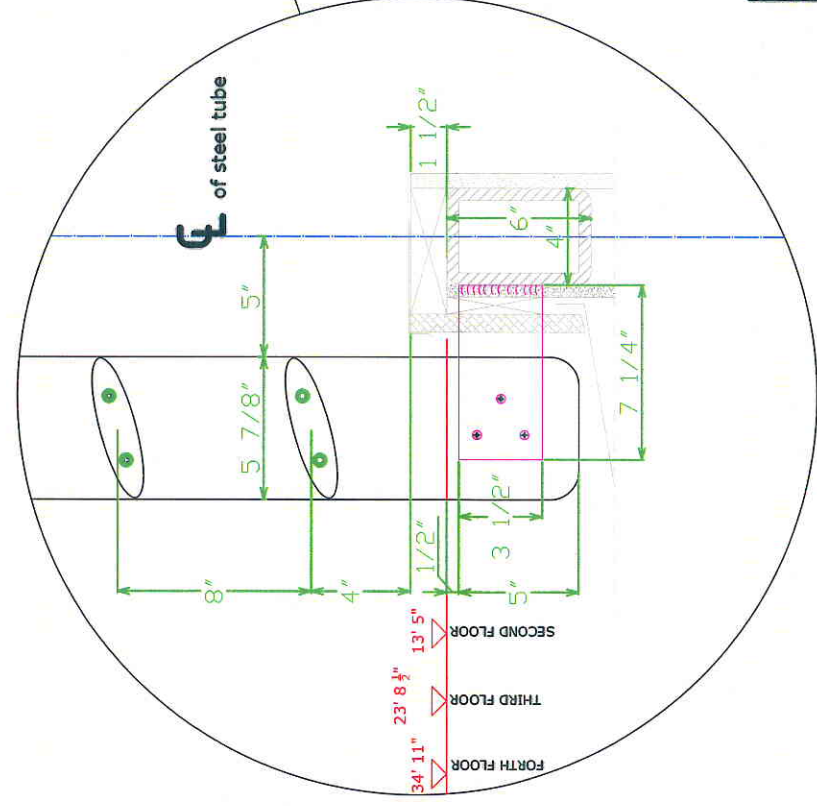




Detail 1



Detail 2



Detail 3

Client / Project: HOUSTON TX

Description: Cypress wood Louvres, fixed

Detail: Fixation details

Savannah
Trims inc.



Dwg. Nr.: ST_Rice_6

Drawn by: MM

Dwg Scale:

Revision: 0